

Storm-Pods Brochure 2024/2025

Tel: 01496 300 129

Email: info@storm-pods.co.uk

Web : www.storm-pods.co.uk



About Us

At Storm-Pods we have developed a range of simple and affordable accommodation units, that combine ground-breaking fibreglass building techniques with luxury and comfort in mind. We have a variety of standardised designs, whilst also allowing customers to adapt and add extras as per their own requirements. We pride ourselves on creating weather-proof accommodation pods that are user-friendly, attractive, and cost effective.

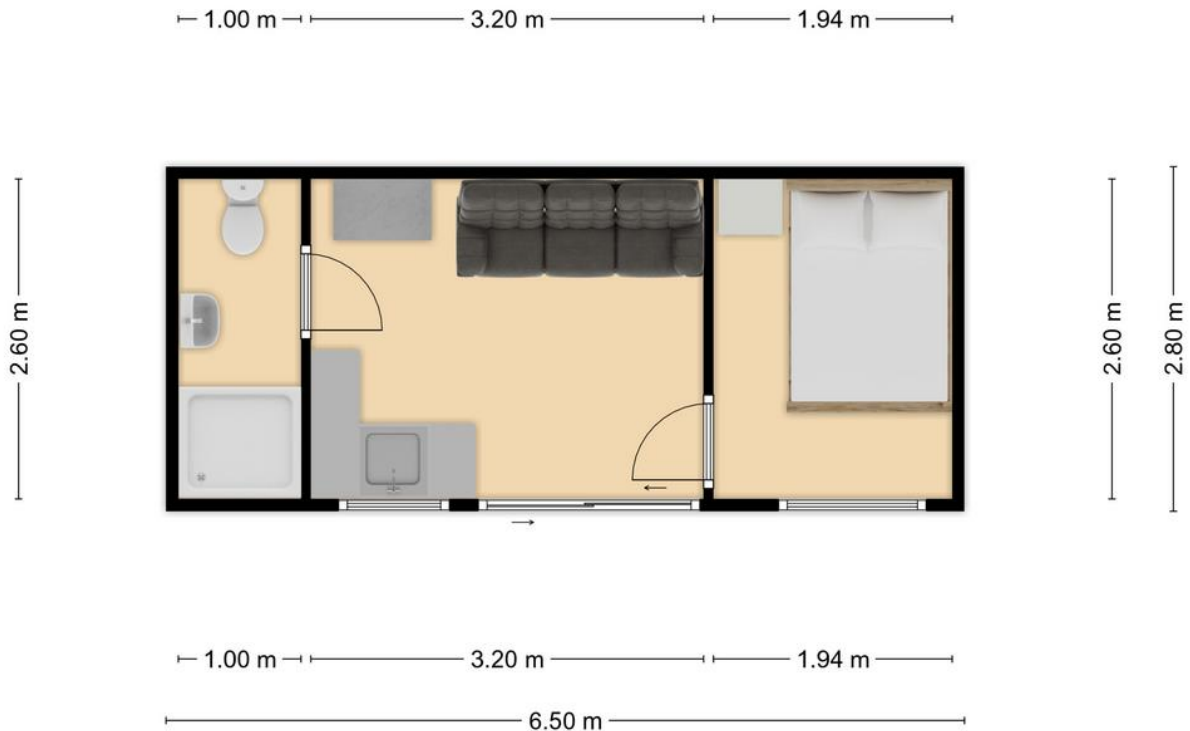
We are based on the Isle of Islay on the west coast of Scotland and all of our pods are built here onsite by our skilled team of tradespeople. Our Managing Director, Angus Newman, started out as the Director of StormCats, Scotland's largest GRP boat building company, using fibreglass to build hulls of his boats. This is what gave him the idea to develop the first fibreglass shelled accommodation unit. Gus concluded that by combining fibreglass with other strengthening materials, he could create a structure that could combat the extreme west coast weather and possess a long lifespan, with a multitude of uses. We use the highest quality of materials and each pod is finished to a precise standard.

We have five of our own Storm-Pods on site here, which make up a popular glamping pod business, with year-round bookings. Although many of our pods are built as glamping and holiday accommodation, we can build pods for a wide variety of uses. Examples include, staff accommodation, office spaces, studios, annex, yoga spaces and permanent homes.

Our two standard models are the **Lagavulin Pod** and **Ardbeg Pod**, bespoke variations can be made on both models to include additional features and layouts. We can also produce alternative and 'one-off' designs, more information can be found on our website: www.storm-pods.co.uk.



Lagavulin Pod Specification



Standard Specification

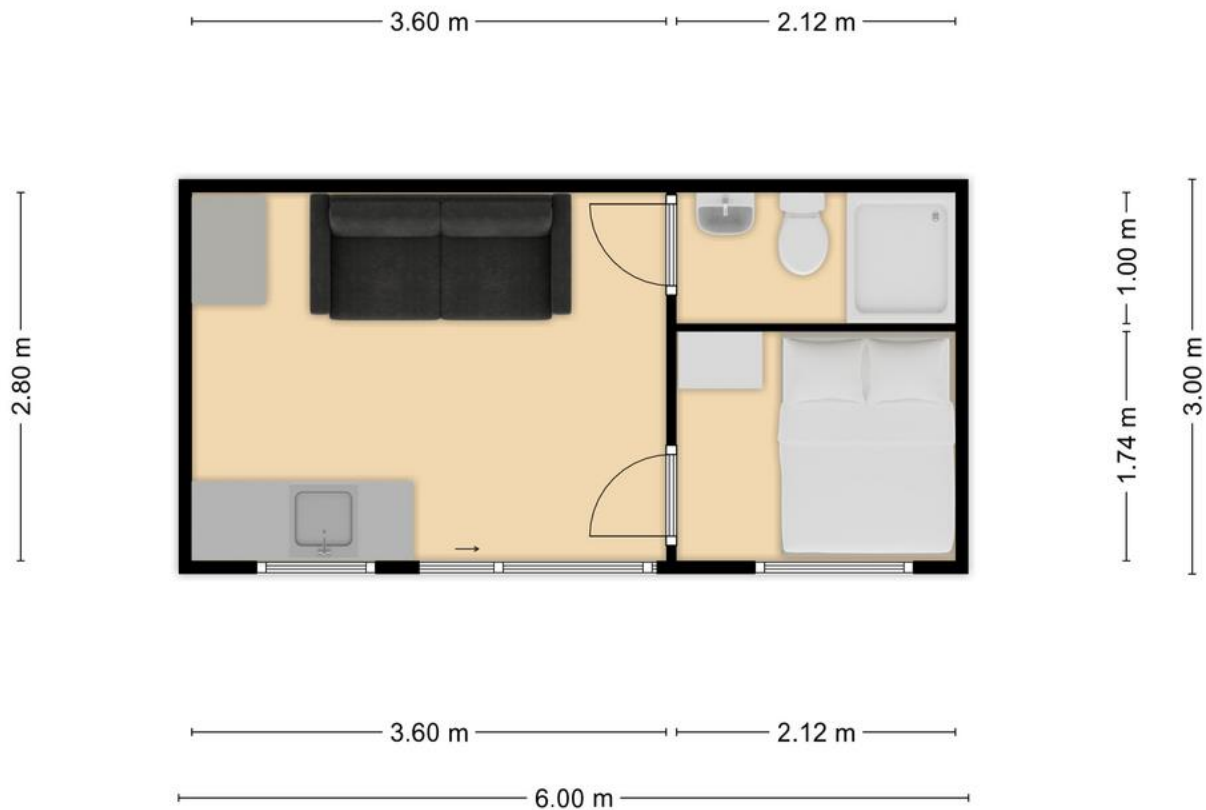
- 18 square metres of floor space
- Bathroom with a wet wall shower unit, toilet and sink
- Premium insulation levels in walls and flooring (including fibre-glassed OSB boards and 100 mm glass wool slab)
- Double glazed windows and patio doors fitted
- Range of electrical sockets
- Lighting fixtures and fittings with Low power LED lights
- V-lining cladding on interior walls
- Timber cladding on exterior walls
- Howden's kitchen units, work top and sink (with range of colour options available)
- Wood effect HD floor lining
- Wall mounted heater in living area
- Narrow design to allow for easier transportation – no road escort required

Pod price as standard: **£25,000**

Optional Extras

- | | |
|--|--|
| <ul style="list-style-type: none"> ➤ Wet wall in full bathroom ➤ Plastic cladding on exterior of pod ➤ Premium oak flooring ➤ Increased window sizes | <ul style="list-style-type: none"> ➤ Additional storage area to rear or side of pod ➤ Increased length or width to create more floorspace ➤ Interior painted/ decorated ➤ Kitchen appliances ➤ Additional kitchen storage and extras e.g. breakfast bar ➤ French patio doors |
|--|--|

Ardbeg Pod Specification



Standard Specification

- 18 square metres of floor space
- Bathroom with a wet wall shower unit, toilet and sink
- Premium insulation levels in walls and flooring (including fibre-glassed OSB boards and 100 mm glass wool slab)
- Double glazed windows and patio doors fitted
- Range of electrical sockets
- Lighting fixtures and fittings with Low power LED lights
- V-lining cladding on interior walls
- Timber cladding on exterior walls
- Howden's kitchen units, work top and sink (with range of colour options available)
- Wood effect HD floor lining
- Wall mounted heater in living area
- Wider design to allow for more floor space and larger living area

Pod price as standard: **£27,000**

Optional Extras

- Wet wall in full bathroom
- Plastic cladding on exterior of pod
- Premium oak flooring
- Increased window sizes
- Additional storage area to rear or side of pod
- Increased length or width to create more floorspace
- Interior painted/ decorated
- Kitchen appliances
- Additional kitchen storage and extras e.g. breakfast bar
- French patio doors